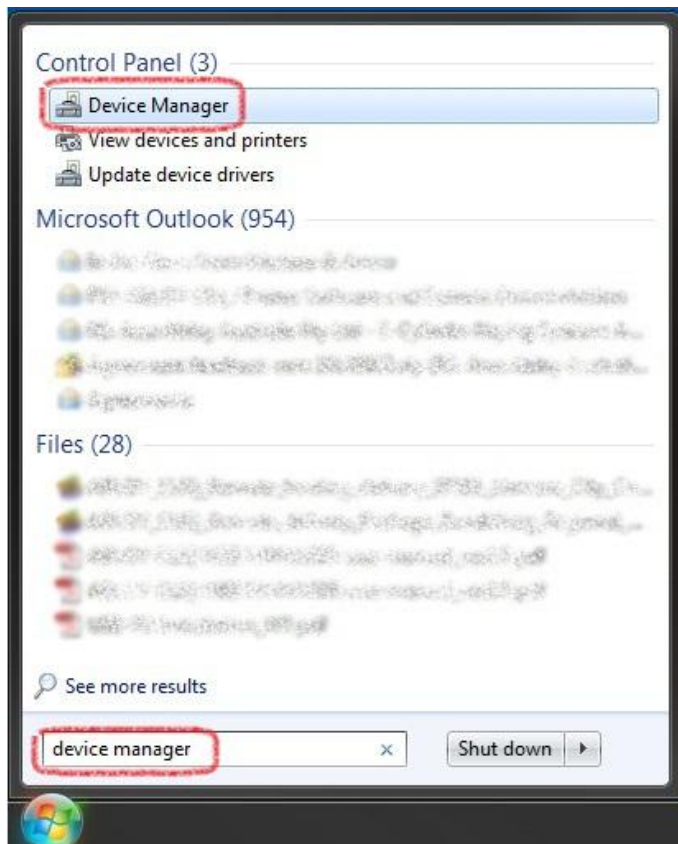
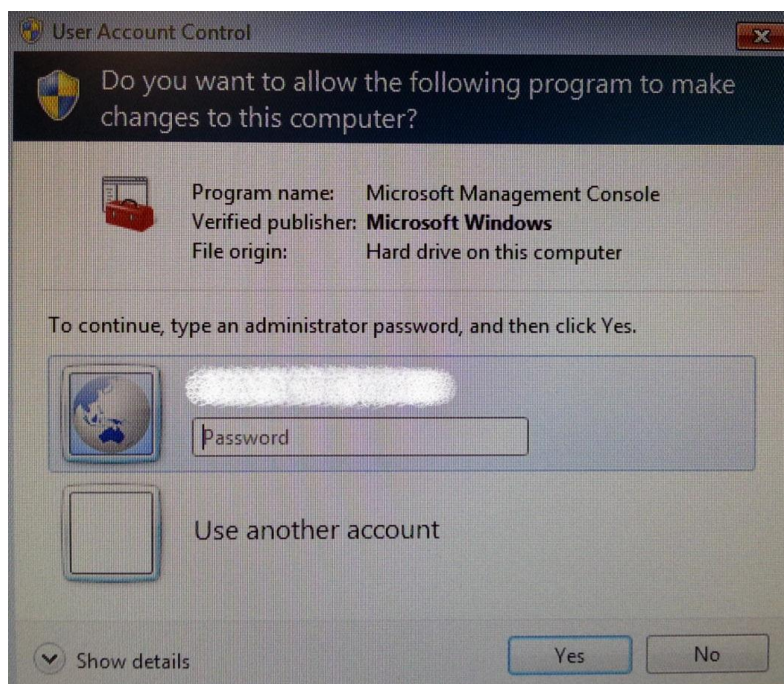


Checking the COM port settings in Win 7

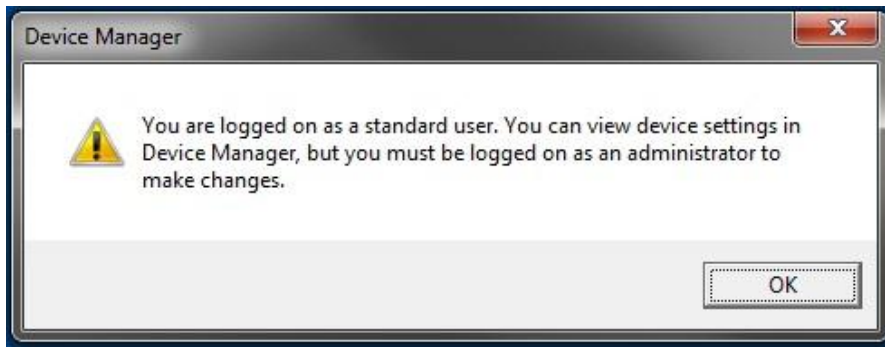
1. Go to Start and search for "device manager". Open Device Manager (see picture below).



2. Windows might ask use for your login details. You should be able to access the Device Manager even though you don't have admin rights on the computer.



3. Click OK when this dialog comes up.



4. Expand Ports (COM & LPT).

You should now find a "USB Serial Port (COMX)".



If you cannot find this then the drivers to the Programming Device are not installed. You can then try to disconnect the Programming Device from the computer and then connect it again. The drivers should be installed automatically. The installation of the drivers will be performed in two steps (using the same wizard).

If the drivers are not installed correctly please download the drivers from the following location:

<http://www.ftdichip.com/Drivers/D2XX.htm>

Download any of the following files:

Currently Supported D2XX Drivers:

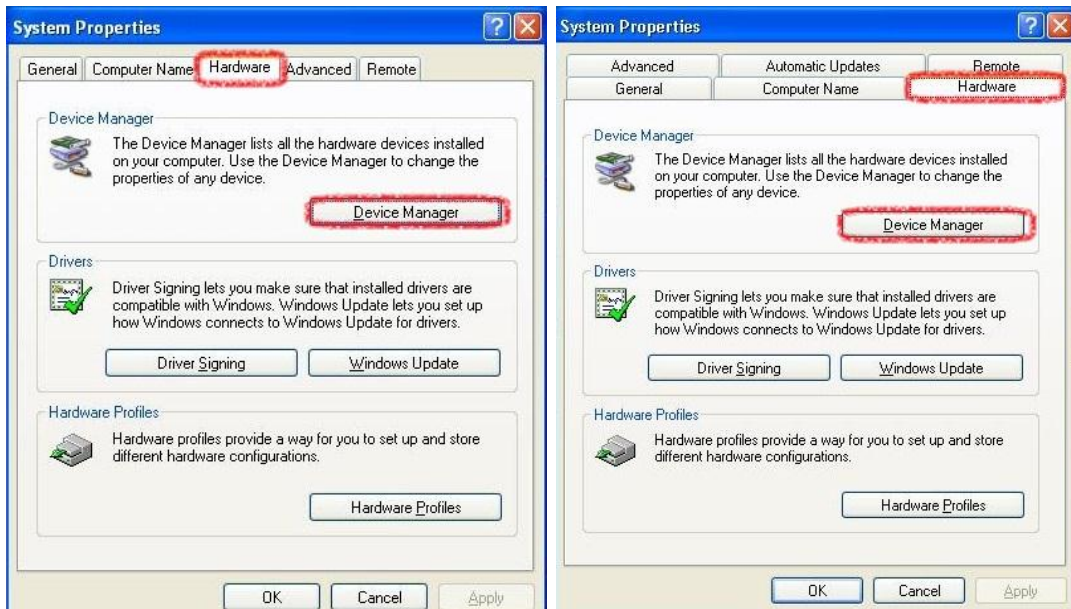
Operating System	Release Date	Processor Architecture			
		x86 (32-bit)	x64 (64-bit)	PPC	ARM
Windows*	2012-04-26	<u>2.08.24</u>	<u>2.08.24</u>	-	-

Checking the COM port settings in Win XP

1. First, right click on "My Computer" on the desktop. Open Properties.



2. Click on the Hardware tab and then Device Manager

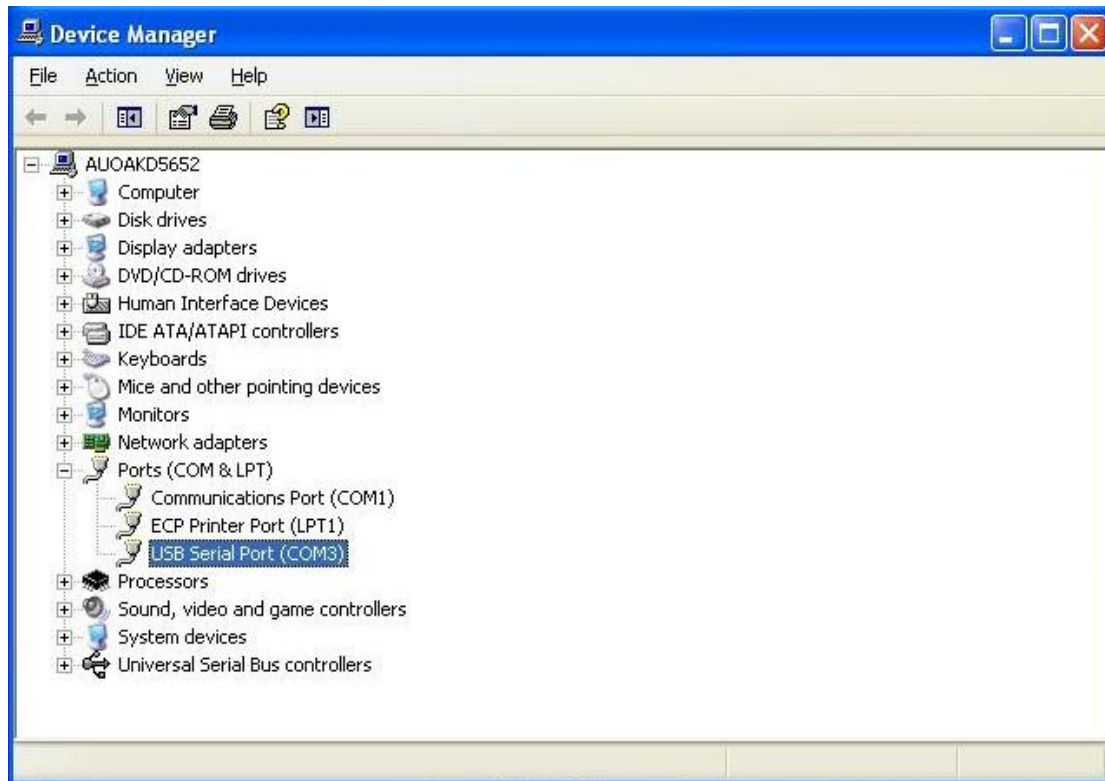


3. Click OK if this warning appears.



4. Expand Ports (COM & LPT).

You should now find a "USB Serial Port (COMX)".



If you cannot find this then the drivers to the Programming Device are not installed. You can then try to disconnect the Programming Device from the computer and then connect it again. The drivers should be installed automatically. The installation of the drivers will be performed in two steps (using the same wizard).

If the drivers are not installed correctly please download the drivers from the following location:

<http://www.ftdichip.com/Drivers/D2XX.htm>

Download any of the following files:

Currently Supported D2XX Drivers:

Operating System	Release Date	Processor Architecture			
		x86 (32-bit)	x64 (64-bit)	PPC	ARM
Windows*	2012-04-26	2.08.24	2.08.24	-	-

Setting the COM port in Abloy KeyControl

1. Open Abloy KeyControl and go to File – CLIQ Settings



2. Set the COM port by selecting the appropriate COM port in the drop down list.



3. The COM port listed for "USB Serial Port" in the Device Manager must match the COM port set in Abloy KeyControl

