

## Importing the \_2.bak file in Abloy KeyControl

Dear customer,

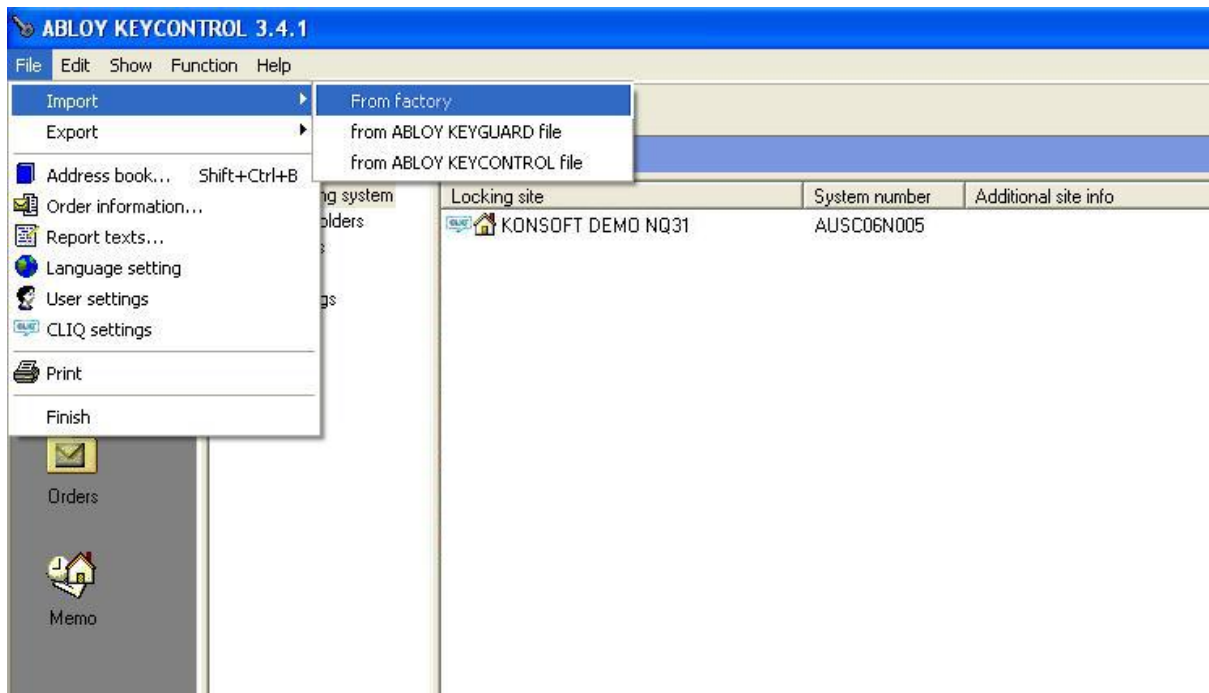
Please follow the instructions below to import your additional key/cylinder data in Abloy KeyControl.

1. Connect the Programming Device to the computer via the USB cable.
2. Make sure that the Programming Device is turned on.
3. Insert the Master C-key, stamped 65535.X (where X usually is 1) on one side of the key, in the left port of the Programming Device.



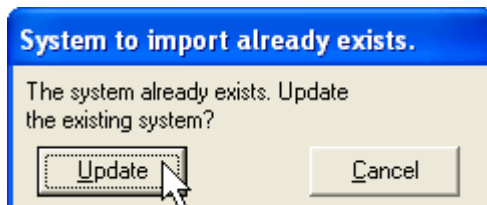
4. Save the latest \_2.bak file we have just sent you. Save it on the Desktop for instance.
5. Start Abloy KeyControl.

6. Go to File – Import – From factory.



7. Browse to location where you just saved the \_2.bak file and click Open.

8. Click Update.



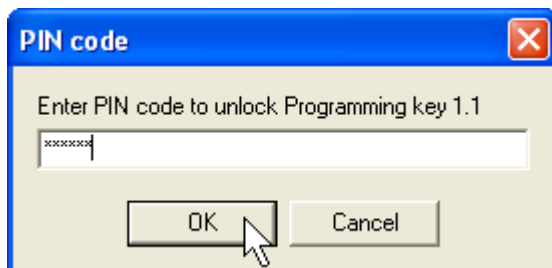
9. The following message will appear.



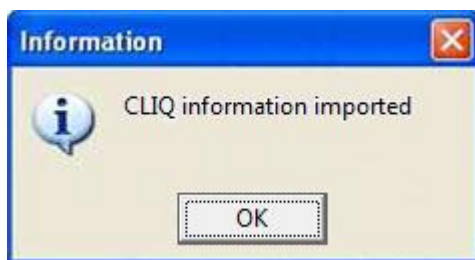
10. Make sure that you have inserted the Master Programming key in the left port of the Programming Device otherwise this message will appear.



11. Enter the Pin code for the Master Programming key and click OK.



12. The following message will appear.



13. All done!