





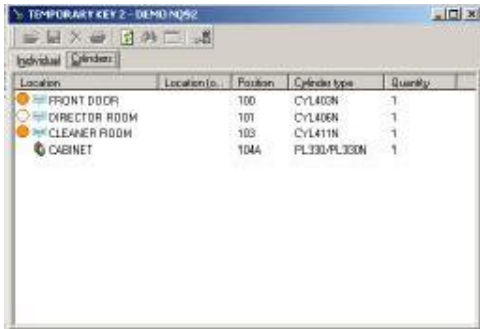
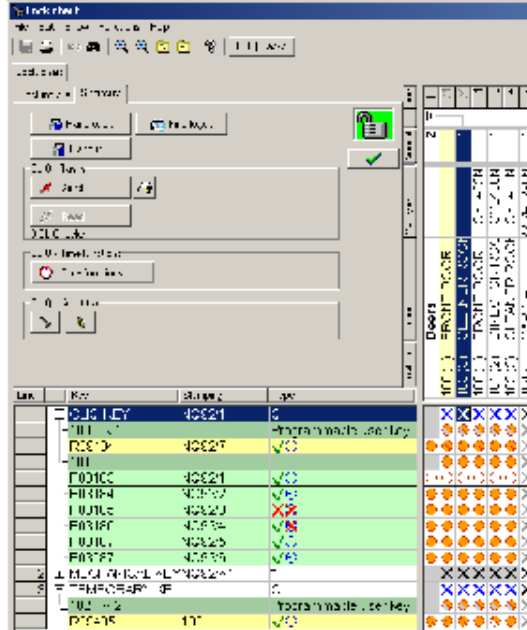
### 14.5 SMARTDISC KEY'S AND PROGRAMMABLE USER KEY'S ACCESS RIGHTS

The mechanical openings of a SMARTDISC key or programmable user key can be browsed from key lines in lock chart or from the key data in basic view as described in ch. 8.3.

Electronic opening is set either for a key group and therefore generated for individual keys, or opening can be set for individual key only.

Electronic openings data can be viewed in the lock chart display by displaying the individual keys (see picture on right) or by opening an individual key's data in basic display (see ch. 8.3) and there the cylinders tab (see picture below).

-  Key has access in cylinder, cylinder has key/key group access
-  Key hasn't access in cylinder, cylinder hasn't key/key group access
-  Key hasn't access in cylinder, cylinder has key/key group access
-  Key has access in cylinder, cylinder hasn't key/key group access



### 14.5.1 ADDING KEY/KEY GROUP ACCESS TO CYLINDER

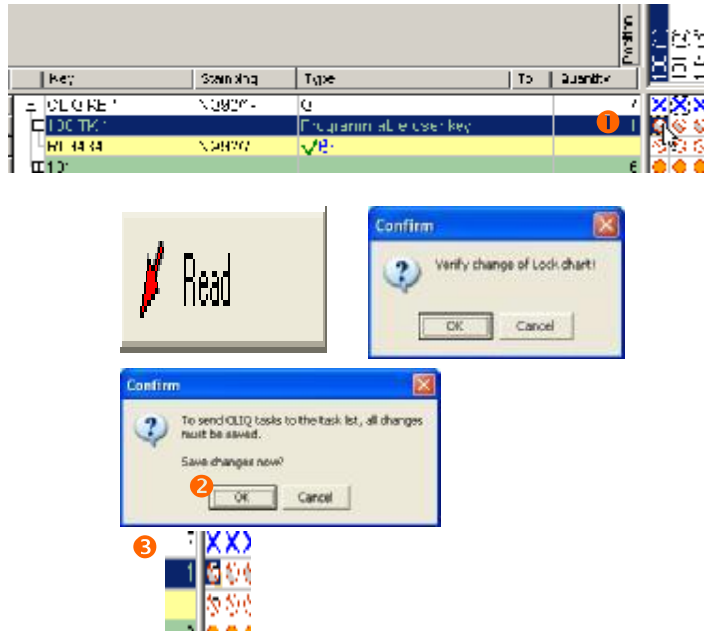
When the new Programmable user keys are ordered into existing CLIQ systems, they will be in new electronic group, which need to be programmed into those locks where key will be used.

Add access rights for new programmable user keys:

- 1 Double click on openings to be added on the group level on each CLIQ cylinder column separately. Symbols changes plus (+). Verify change of Lock chart for the first change.
- 2 Send tasks to programming key.
 

Send

Accept saving the changes.
- 3 Electronic openings symbols change again. Go to cylinders and deliver the programming tasks with programming key. Return and read tasks from programming key.
- 4 Electronic openings symbols change to perform the actual access right status in cylinders.



Key	Stamping	Type	To	Quantity	Position
CLIQ KEY	NQ92/1-	Q			100 (1)
100 TK 1		Programmable user key			101 (2)
R09434	NQ92/7	✓⊕			


### 14.5.2 CHANGING SMARTDISC KEY'S AND PROGRAMMABLE USER KEY'S OPENINGS

Electronic openings are changed in Lock chart. The user has to be authorized for ordering keys in user rights.

Electronic access rights can be added and removed for individuals.

Electronical access rights can be given for those keys which have mechanical openings **X** for the cylinder.

By double clicking the electronic opening symbol you can add opening for the key according to the picture below.

- 1 Double click on openings to be changed. Symbols changes either to plus (+) or minus (-) according to the change. Verify change of Lock chart for the first change.
  - 2 Send tasks to programmable user key.  Send
- Accept saving the changes.
- 3 Electronic openings symbols change again.
  - 4 Electronic openings symbols change to perform the actual access right status in key.

