

Instructions on how to move KeyControl from one computer to another

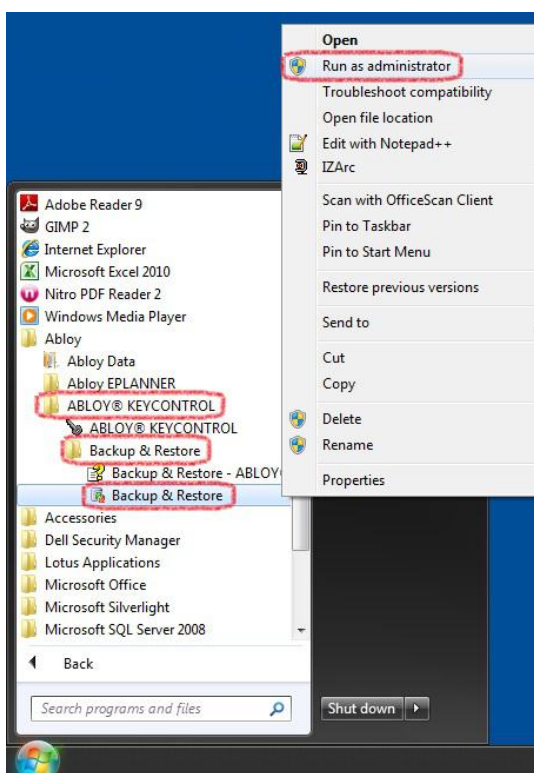
These instructions are applicable for customers with stand-alone KeyControl installation i.e. when the database is installed on the same computer as KeyControl. The other way of installing KeyControl is to have a server-client environment. See separate instructions for moving KeyControl in that case.

Step 1

The first thing we have to do is to take a backup of the database. This is done on the old computer.

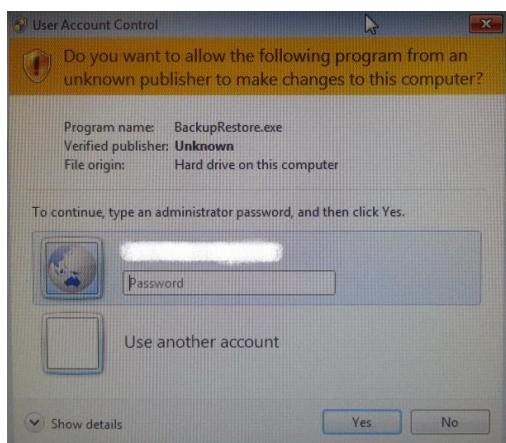
Make sure KeyControl is closed down.

Go to Start – All Programs – Abloy – Abloy KeyControl – Backup & Restore – Right click on Backup & Restore and then Run as administrator unless you are not already logged as an Windows admin user.



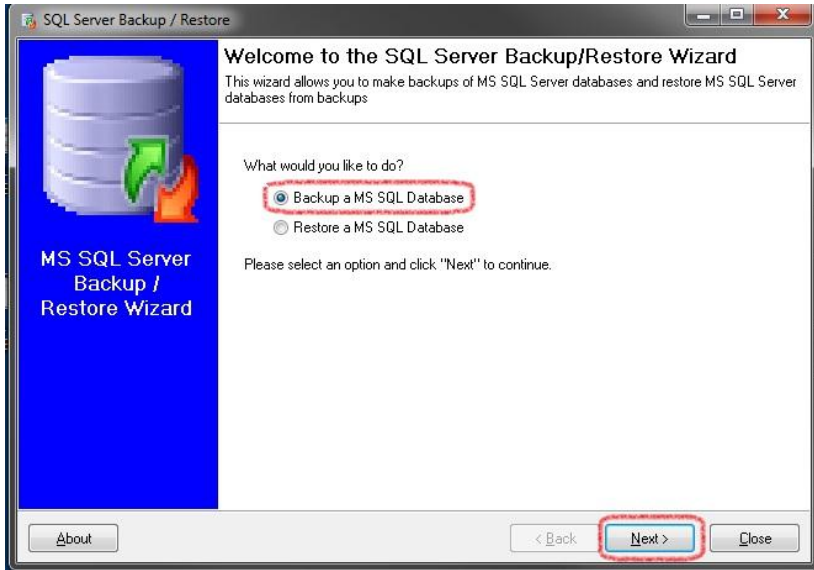
Step 2

Unless you are not already logged as an Windows admin user login using a admin account.



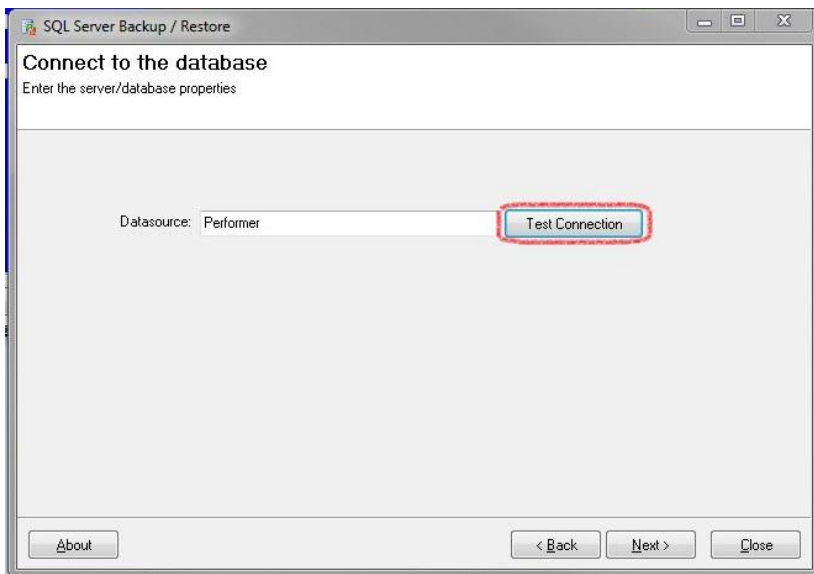
Step 3

Select Backup a MS SQL Database and click Next.

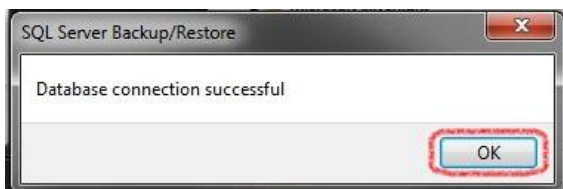


Step 4

Click Test Connection.

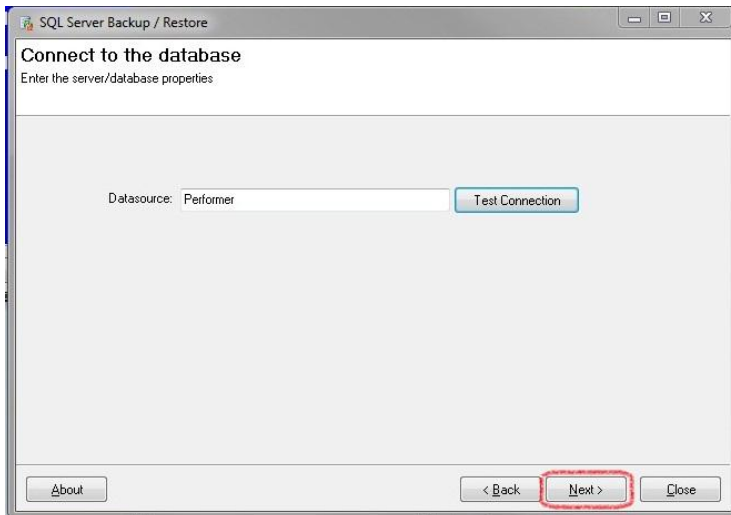


This message should appear:



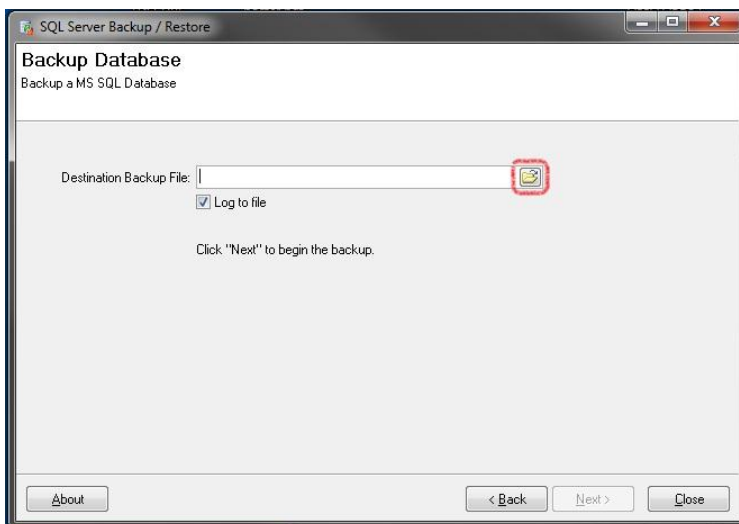
Step 5

Click Next.



Step 6

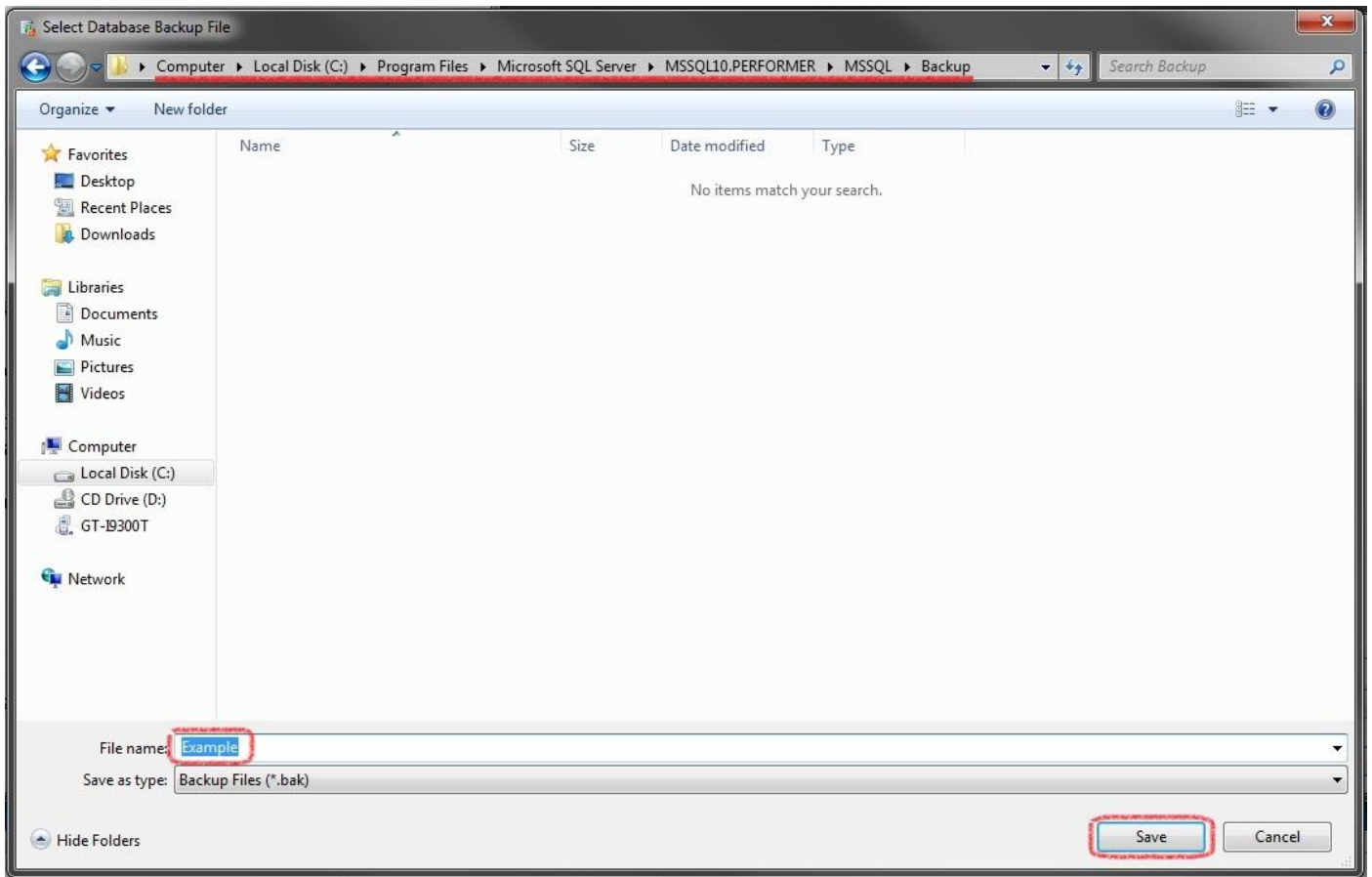
Click on the folder icon



Step 7

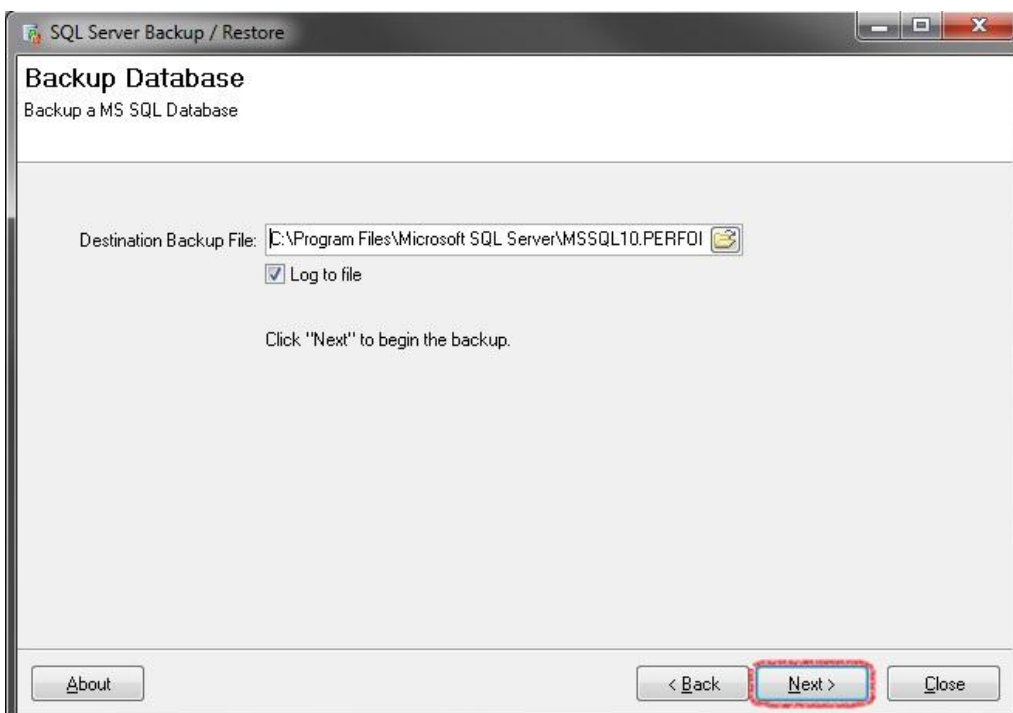
Browse to the backup location in the Microsoft SQL Server folder under Program Files on the C: drive. Give the backup file a name such as "Example".

Click Save.



Step 8

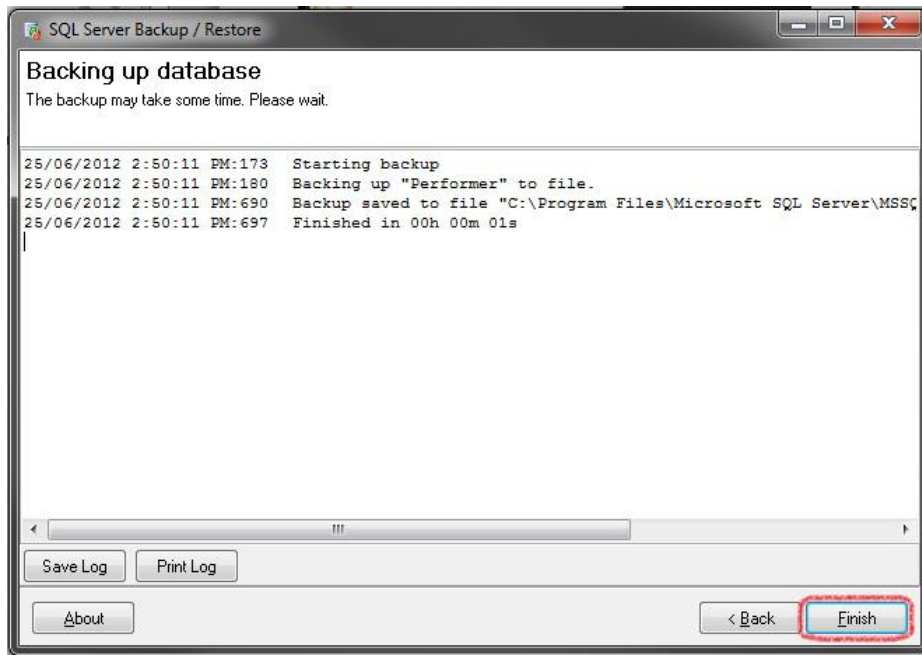
Click Next



Step 9

The database is now being backed up. It should only take a few seconds or less.

Click Finish when done.



You have now backed up all the data. This will now be restored on the new computer.

Step 10

Copy the backup file from the backup location to **C:\Temp** on the **new computer**.

Step 11

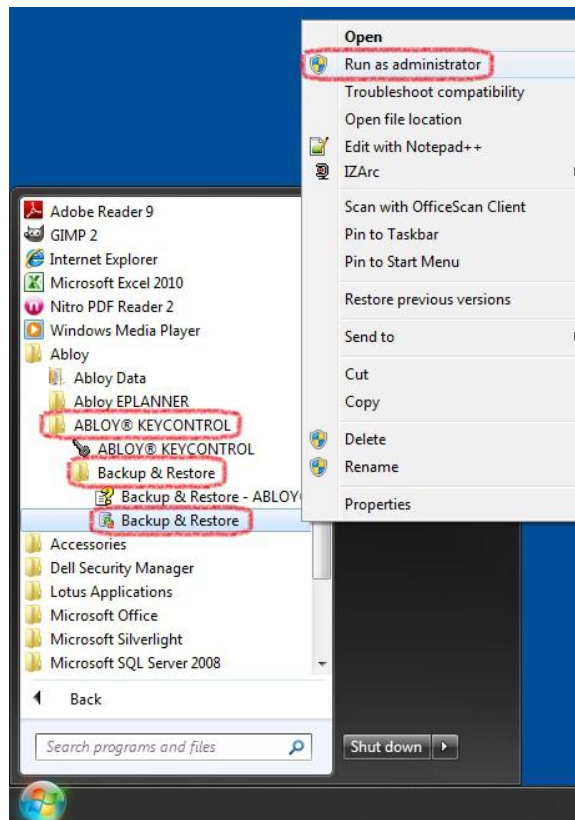
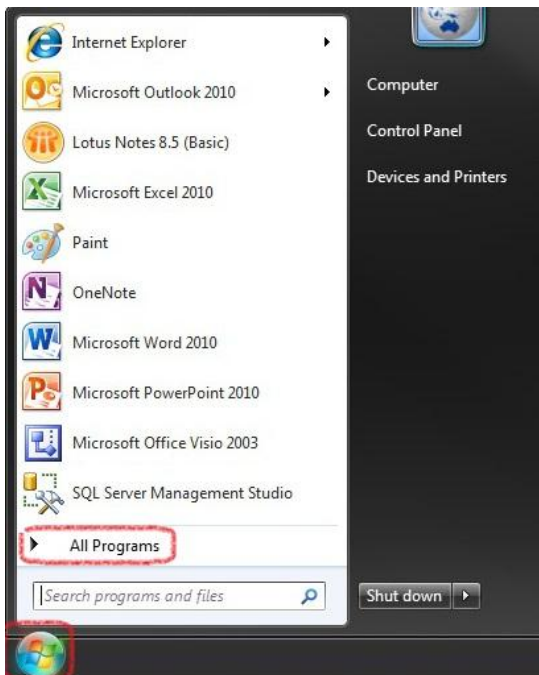
The following steps will be done on the new computer unless stated otherwise.

Install KeyControl just as a normal stand-alone installation. **Make sure that you install the same version of KeyControl as the old computer. It will not work otherwise!**

Step 12

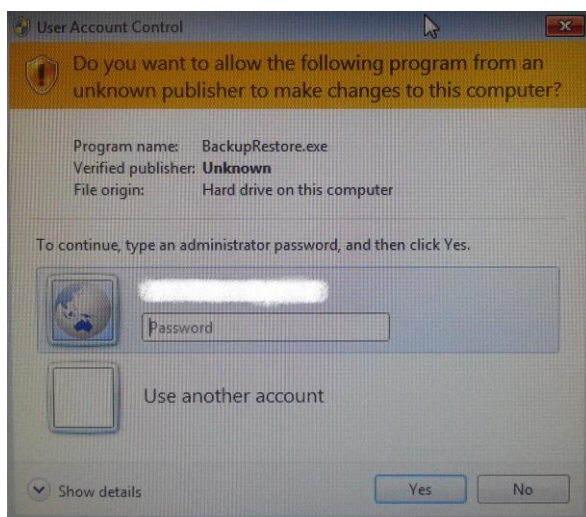
Make sure KeyControl is closed down.

Go to Start – All Programs – Abloy – Abloy KeyControl – Backup & Restore – Right click on Backup & Restore and then Run as administrator unless you are not already logged as an Windows admin user.



Step 13

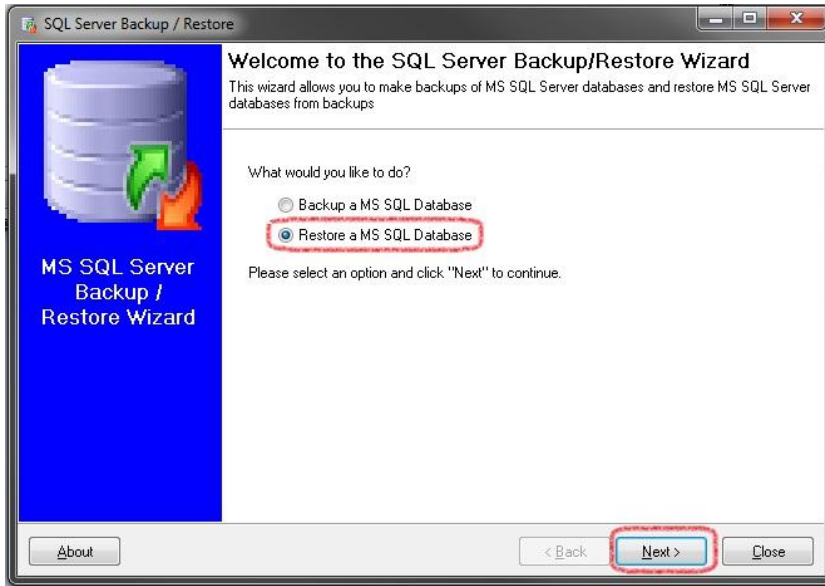
Unless you are not already logged as an Windows admin user login using a admin account.



Step 14

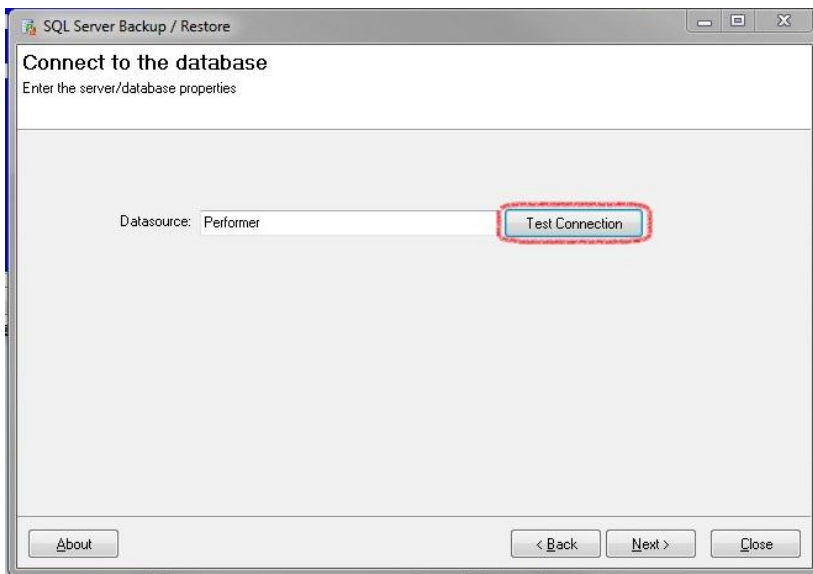
Select Restore a MS SQL Database.

Click Next.

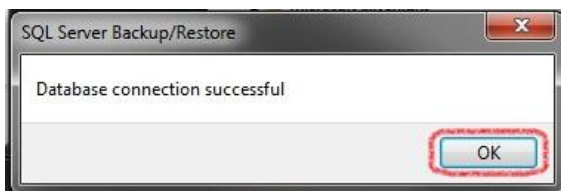


Step 15

Click Test Connection.

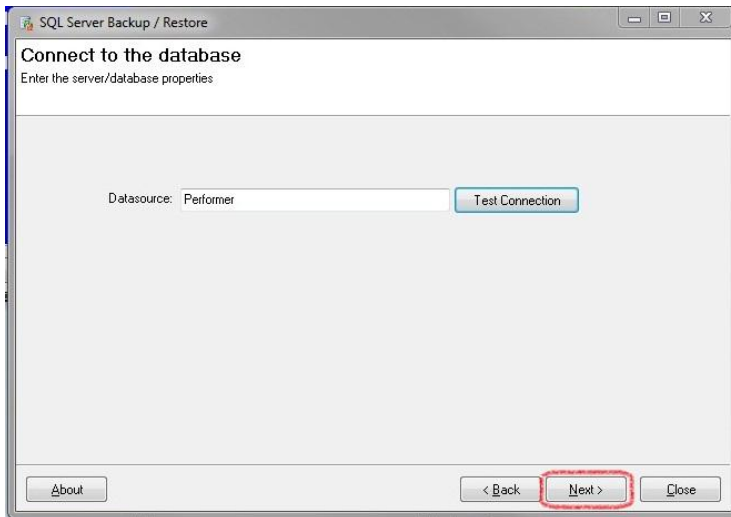


This message should appear:



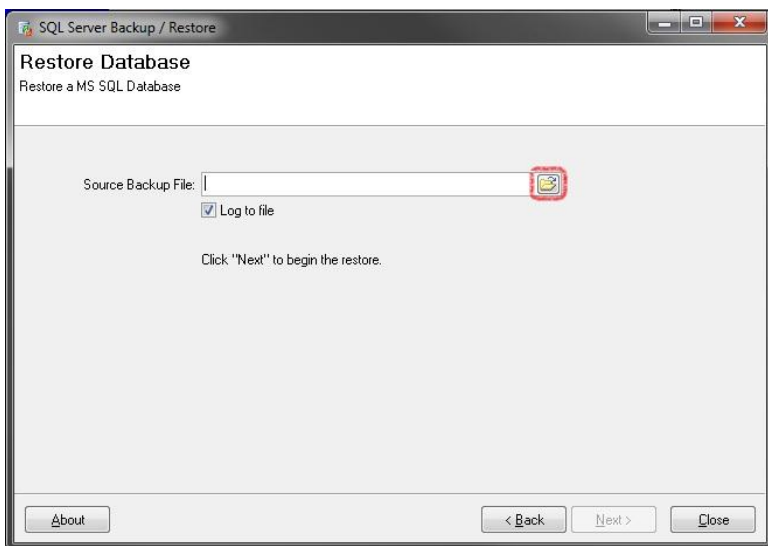
Step 16

Click Next.



Step 17

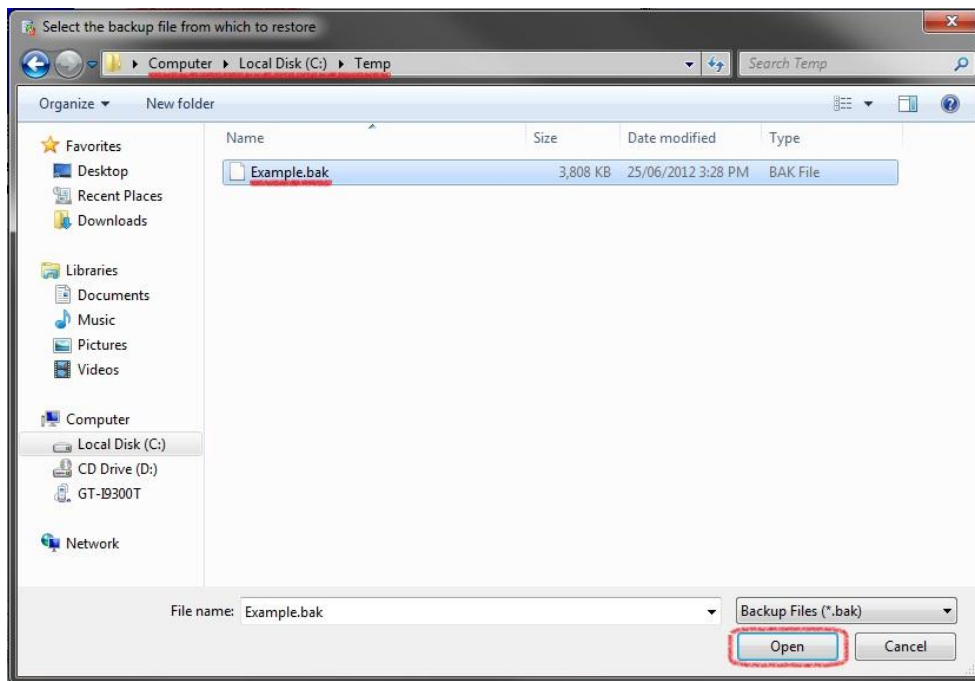
Click on the folder icon



Step 18

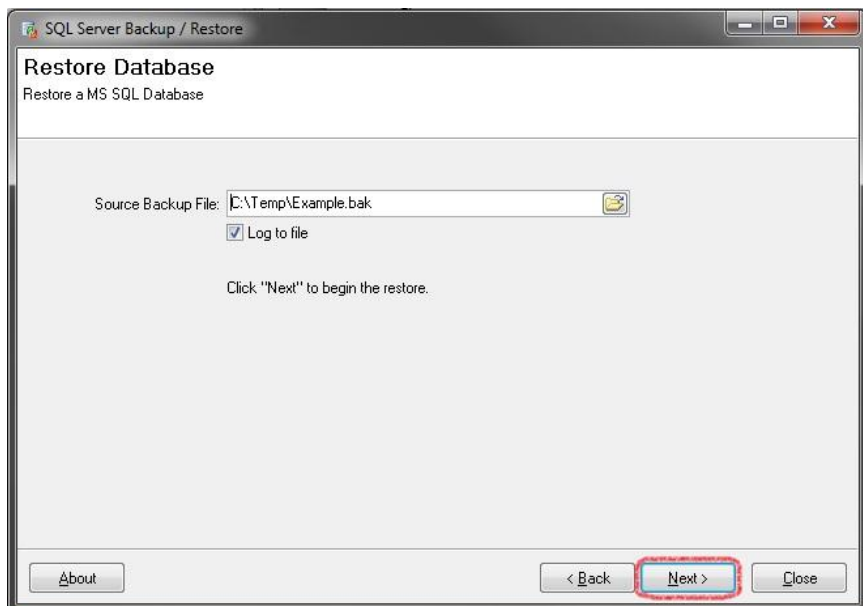
Browse to the location of the backup file.

Highlight the file and click Open.



Step 19

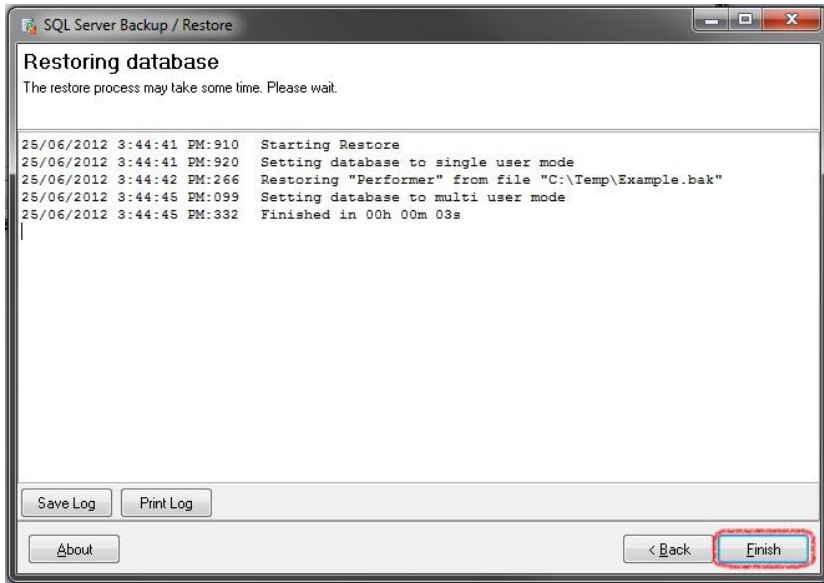
Click Next.



Step 20

The database is now being restored. It may take some time.

Click Finish when done.



Step 21

Login to KeyControl as normal.

Make sure that you have installed the drivers to the programming device on the new computer and that you have defined the correct COM port settings in KeyControl. See separate guide for detailed instructions.

You must also connect an address book. You can set the address book in keyControl by going to File-Address book.

Once you have verified that everything is working fine on the new computer you should uninstall KeyControl on the old computer