

Dear Customer,

Please follow the steps below to sync the information stored in a lock to the KeyControl database.

1. Open the Lock chart in Abloy KeyControl.
2. Right click on the lock (105 in the example below). Then go CLIQ – Get CLIQ functionality from cylinder

The screenshot displays the 'Lock chart' application window. The interface includes a menu bar (File, Edit, Show, Functions, Help), a toolbar with icons for file operations and search, and a 'CLIQ Tasks' section with buttons for 'Hand out...', 'Hand in...', 'Send', 'Read', 'Time functions', and 'Audit trail'. The main area is a table with columns for 'Post/Location', 'Cyl. Type', 'Differ/Quant', and 'Line'. A right-click context menu is open over the entry '105 (5) SWP', with 'CLIQ' highlighted. A secondary menu is also open, with 'Get CLIQ functionality from cylinder' highlighted.

Post/Location	Cyl. Type	Differ/Quant	Line
100 (1) FRONT DOOR	CYL403N	1	1
101 (2) DIRECTOR ROOM	CYL332N	1	2
102 (3) SECRETARY ROOM	CYL332N	1	3
103 SECRETARY ROOM	CY321/CY321N	1	4
104 (4) CABINET	PLW336N	1	5
105 (5) SWP	PLW336N	1	6

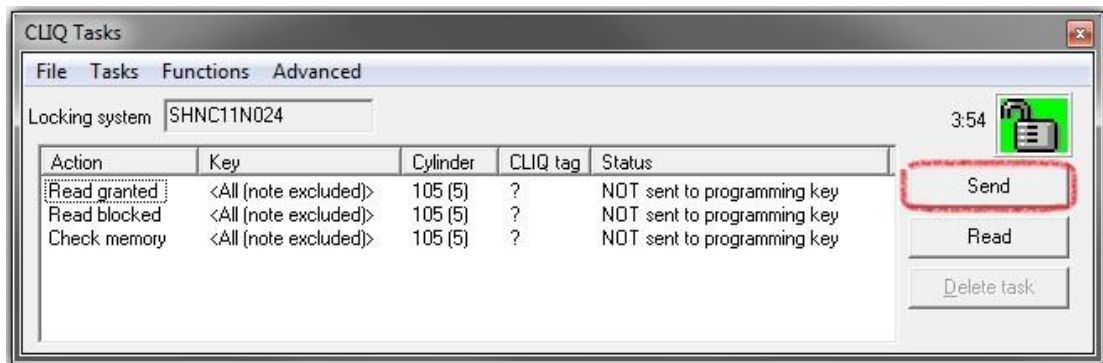
Li...	Key	Stamp...	T...	Dif...	Quantity
1	CLIQ KEY	Q			5
1	1				2
2	2	Progr			3
2	MECHANICAL NO447/K1*				1

- Properties...
- CLIQ
- Manage cylinder groups...
- Show version...
- History...
- Get audit trail from cylinder
- Show audit trail of the cylinder...
- Save audit trail for cylinder...
- CLIQ functionality from database to cylinder
- Clear electronic openings
- Show memory usage in cylinder
- Get memory usage info from cylinder
- Get CLIQ functionality from cylinder
- Save CLIQ functionality for cylinder...
- Cylinder settings

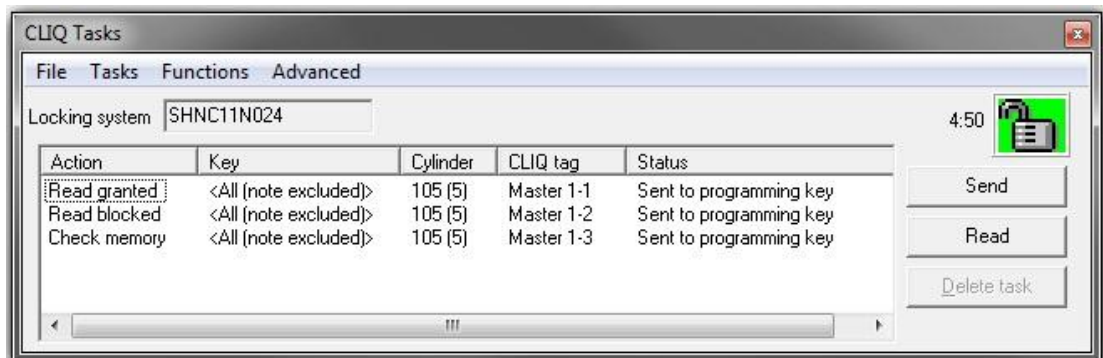
3. Make sure you have the Master Programming key inserted in the left port of the Programming Device.



4. Click on Send in the CLIQ Tasks pop up window.



5. The status should now be changed to Sent to Programming key



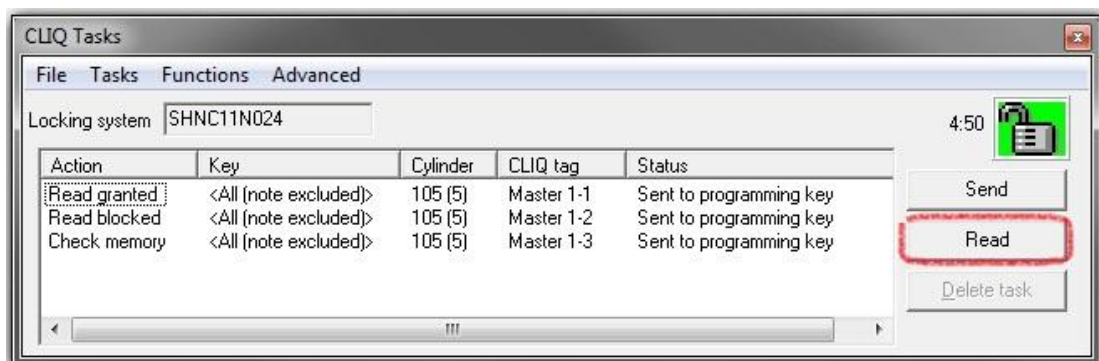
6. Now insert the Master Programming key in the lock (105 in this example). Wait until the re-programming is done. It may take some time. The key will indicate when the programming is done by making a long beep.



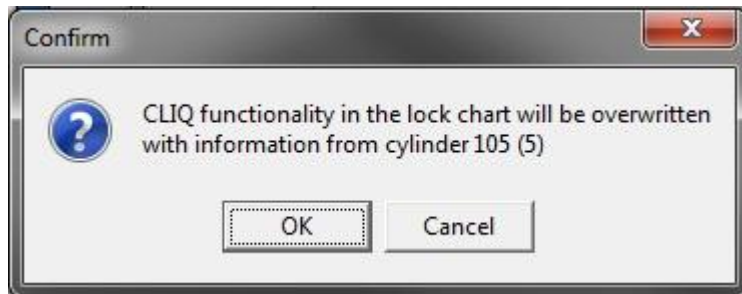
7. Insert the Master Programming key inserted in the left port of the Programming Device again.



8. Click Read in the CLIQ Tasks pop up window



9. Click OK.



10. Done! The KeyControl database is now in sync with the information in the lock.