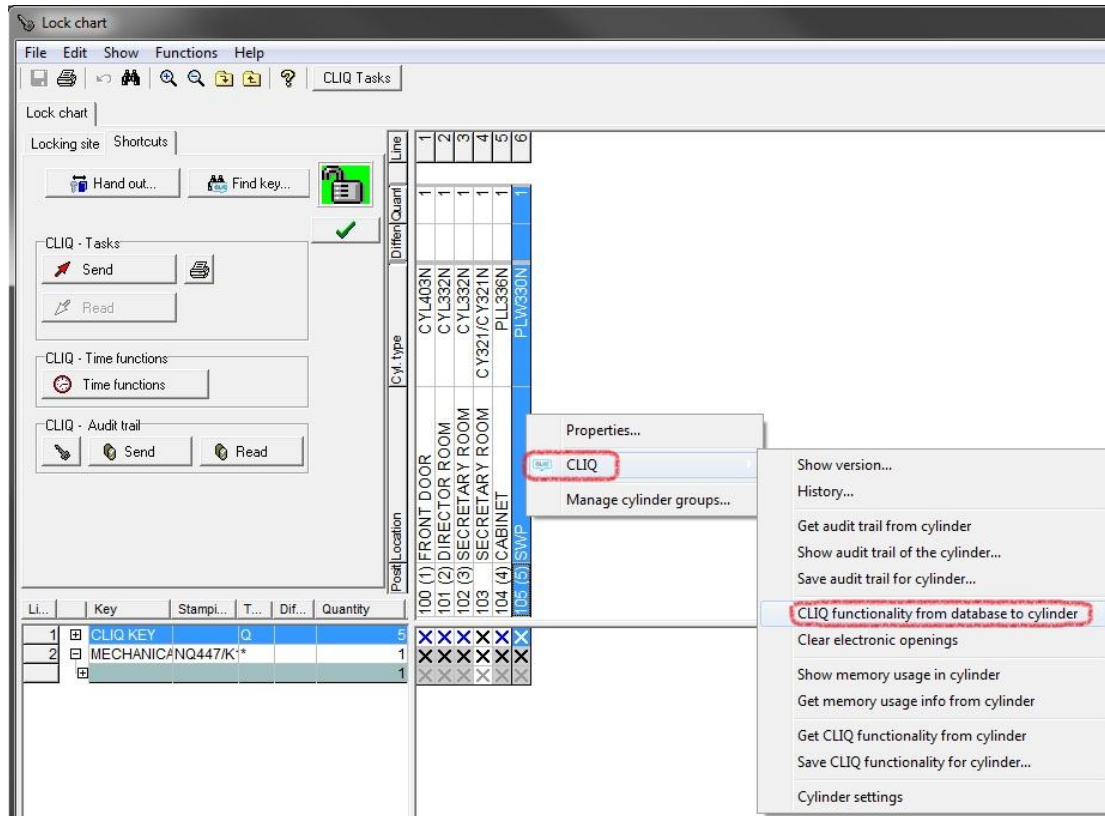


## Dear Customer,

Please follow the steps below to sync the information stored in the database to a lock.

1. Open the Lock chart in Abloy KeyControl.
2. Right click on the lock (105 in the example below).  
Then go CLIQ – CLIQ Functionality from database to cylinder



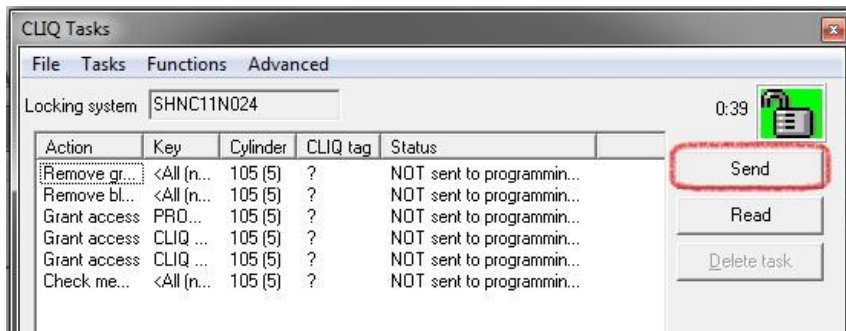
3. Click OK



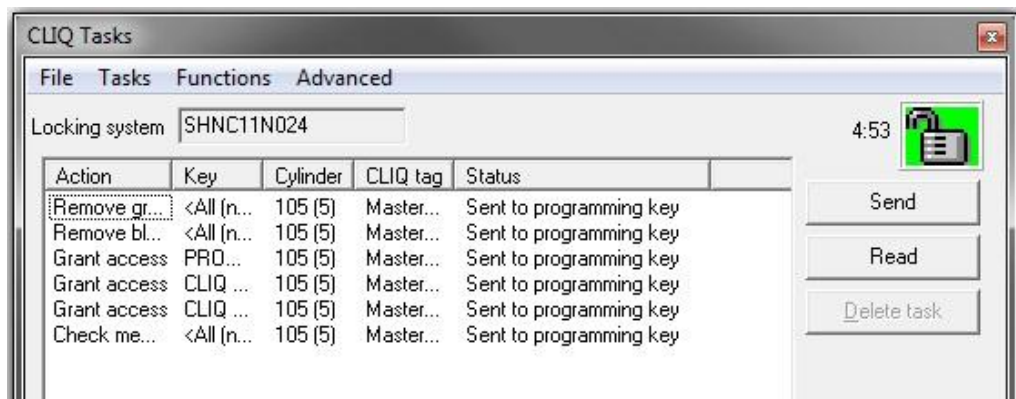
4. Make sure you have the Master Programming key inserted in the left port of the Programming Device.



5. Click on Send in the CLIQ Tasks pop up window.



6. The status should now be changed to Sent to Programming key



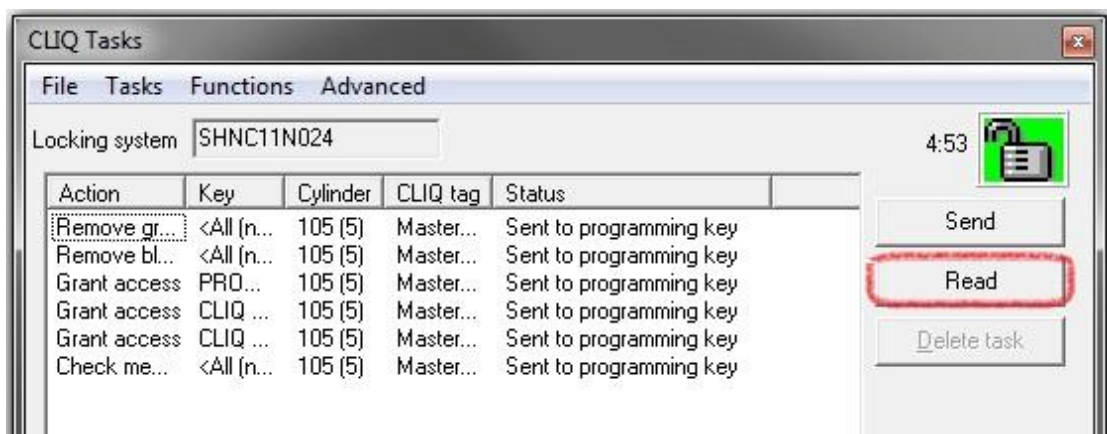
7. Now insert the Master Programming key in the lock (105 in this example). Wait until the re-programming is done. It may take some time. The key will indicate when the programming is done by making a long beep.



8. Insert the Master Programming key inserted in the left port of the Programming Device again.



9. Click Read in the CLIQ Tasks pop up window



10. Done! The lock is now in sync with the information in the database.